



urbanpods™

Your Space. Your Pod.

MODEL RANGE



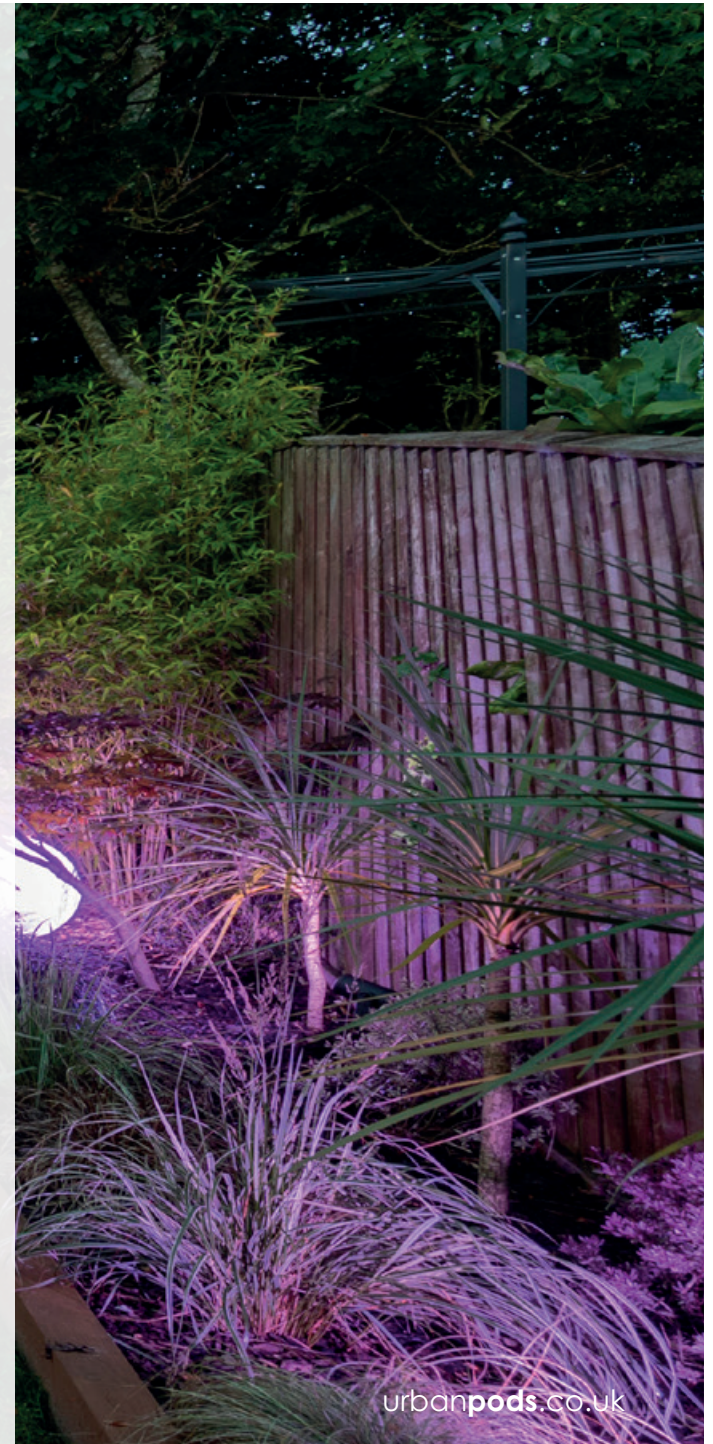
Beautiful pods to create your perfect garden sanctuary



OUR COLLECTION

Architecturally designed, our pods are not only stunning, but they have so many uses too. They add to your existing accommodation offering inspiring space solutions for your home. They provide the chance to add that much needed extra sitting room, guest room or home office, maximising your home and utilising your garden space.

Please take a look at our standard pod models. If you can't find one that suits then we will make a bespoke one just for you.



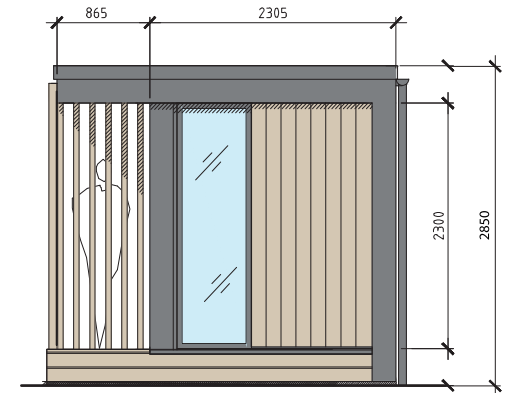
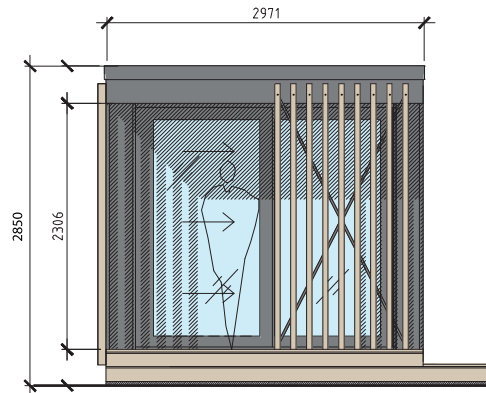
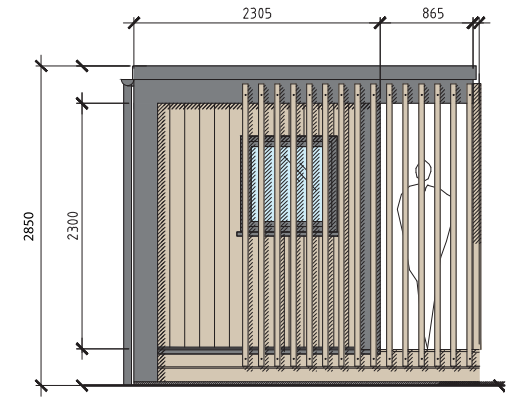
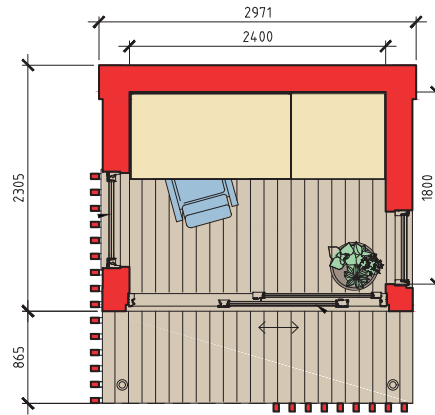




UFFICIO

The ufficio is well equipped to offer a perfect office.

The ufficio's "neat" size and space saving design means that it is forgiving within the smallest of gardens but still maintains all the functionality you would expect from an office space. Comfortably holding a sizable desk with office storage, it offers a peaceful place to work productively away from the hustle and bustle of the home. Whether it used as an office retreat, music room or studio, the ufficio ticks the boxes for the compact urban office retreat.

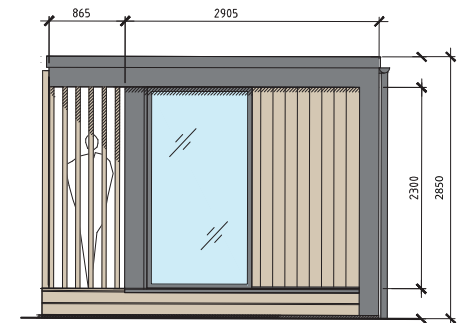
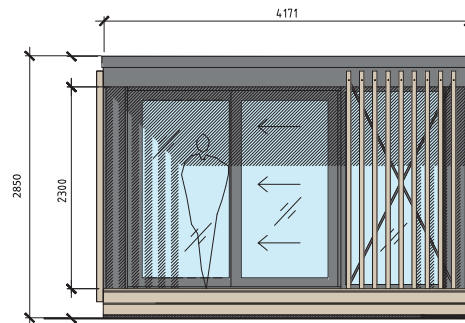
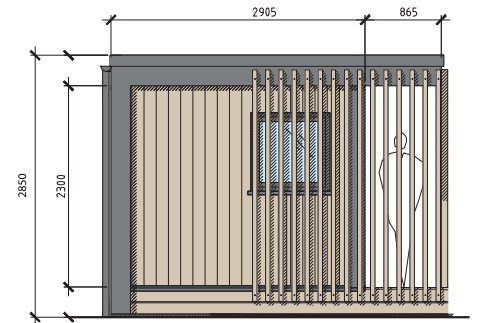
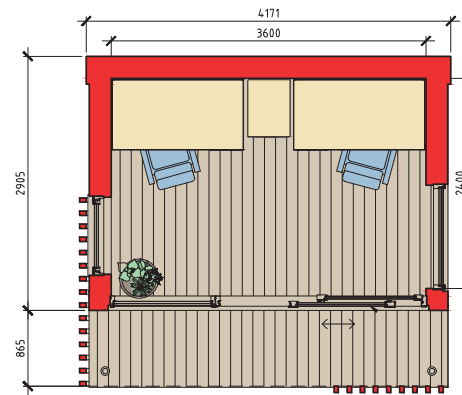




MEDIO

The medio offers great space and functionality for those who seek the perfect office environment whilst working from home.

A step up from the ufficio pod, the medio provides just that little extra space you may require. Comfortably accommodating two work stations, it is perfect for an office retreat, music room, art studio, cinema pod, beauty or consultation room. With more glazing than our ufficio pod, the medio provides that extra feeling of being nestled within your garden environment.

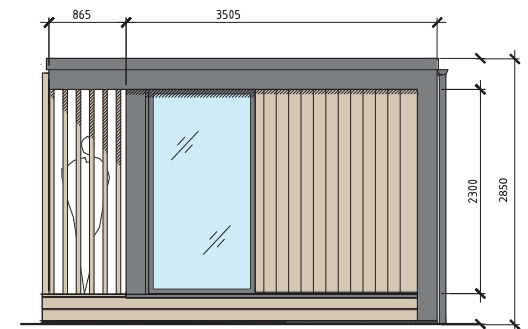
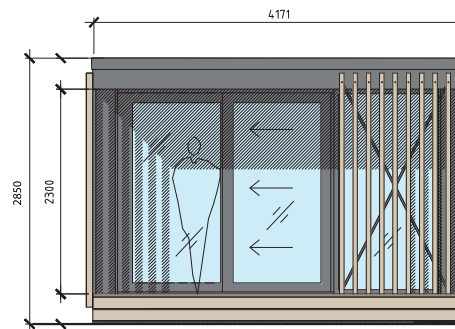
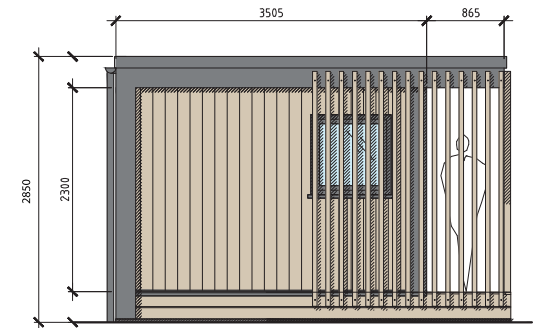
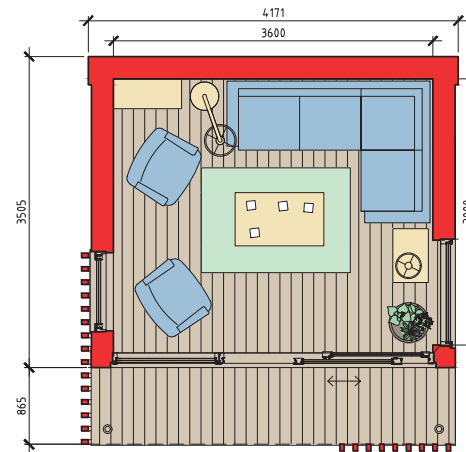




PERFETTO

The perfetto model suits the medium sized or large garden.

Generous sized rooms, they offer huge versatility and are great entertaining spaces, additional lounge or spare bedroom, and make a large office space or gym.





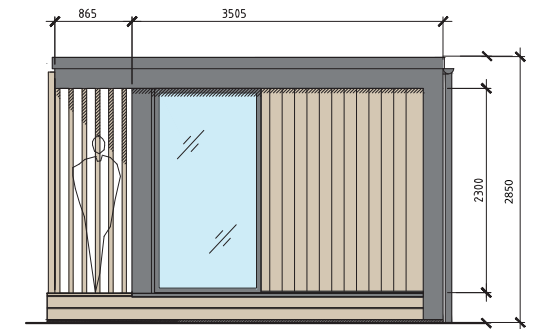
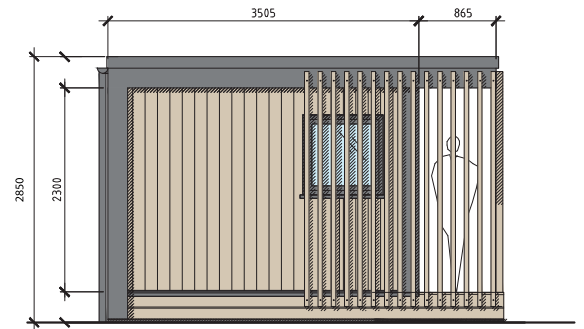
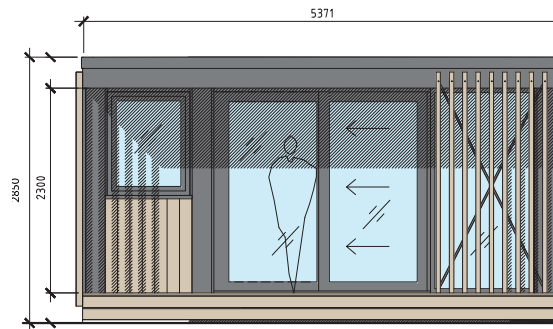
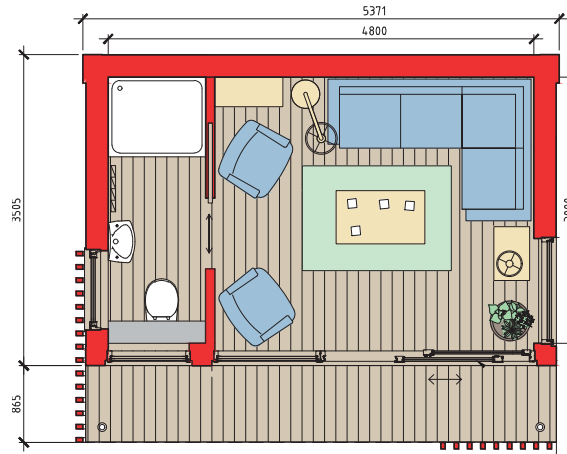
urbanpods

PERFETTO

PERFETTO +

The perfetto + model suits a large garden.

At 23.47 m² this bountiful pod boasts a shower room and is the obvious choice as a guest bedroom, beauty treatment pod or self-contained office for a few staff.

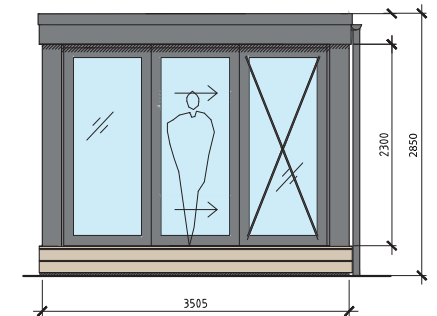
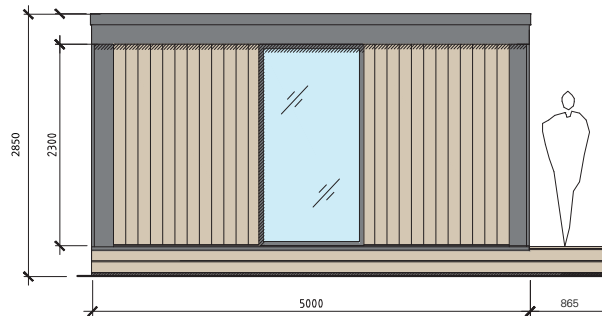
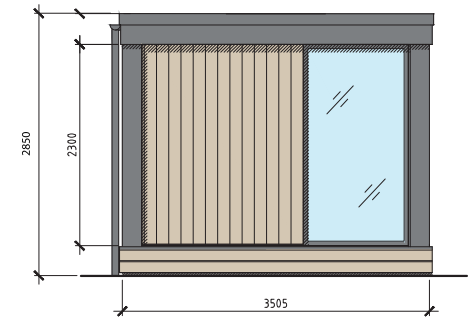
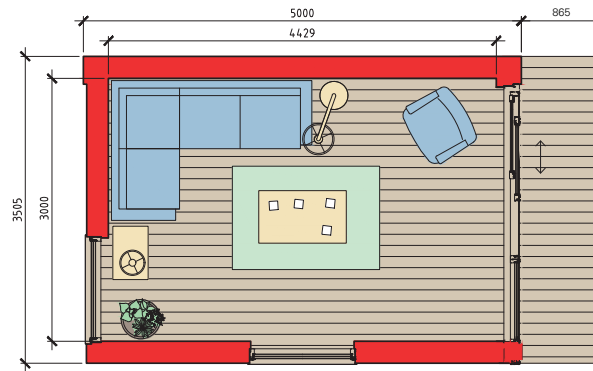




MASSIMO

The massimo pod offers huge functionality as not only is it a substantial size, but its design recognises different variables with the garden.

Full length doors extending along the whole side the pod offers the same wonderful natural light whilst at the same time offering a little more flexibility as to its location and more internal wall space within the pod itself.



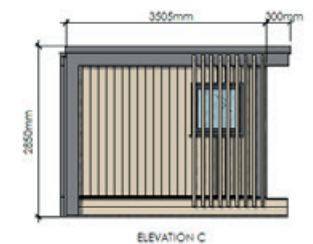
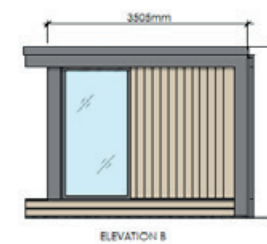
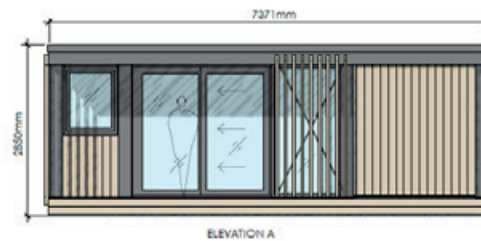
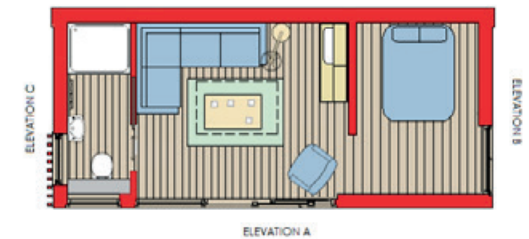
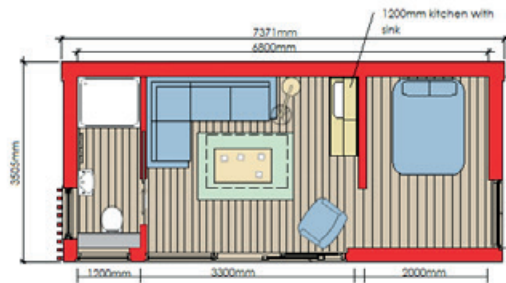


MASSIMO

MASSIMO +

The massimo + requires a large garden as its host.

Sporting a shower room, kitchenette and separate bedroom, this self-contained annex pod is great for housing loved ones and visitors alike. A whopping 25 sq meters, it offers generous accommodation suitable for longer family stays or glamping cabins.



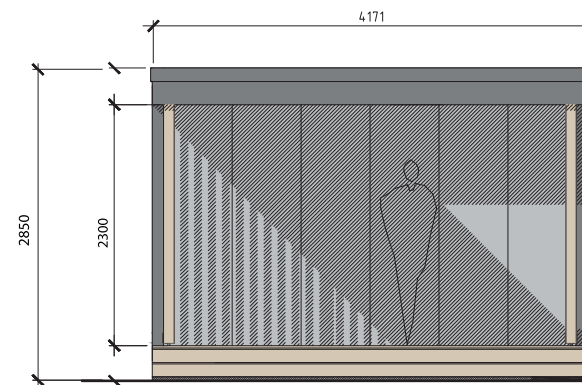
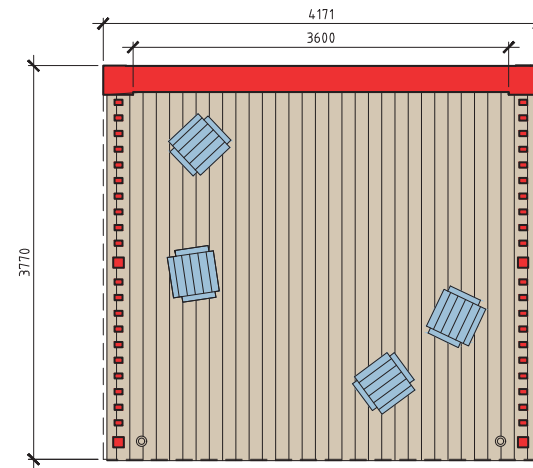


MASSIMO +

CUCINA

Our one of a kind Cucina is an outdoor garden cooking and entertaining space.

The open panel design, allows the warmth from the summer weather to enter the space and our high quality super insulated roof structure retains the heat for those underneath. Also popular for housing hot tubs, it can be adapted to suit a whole host of uses including festival cooking and more basic shelters for parks and golf clubs.

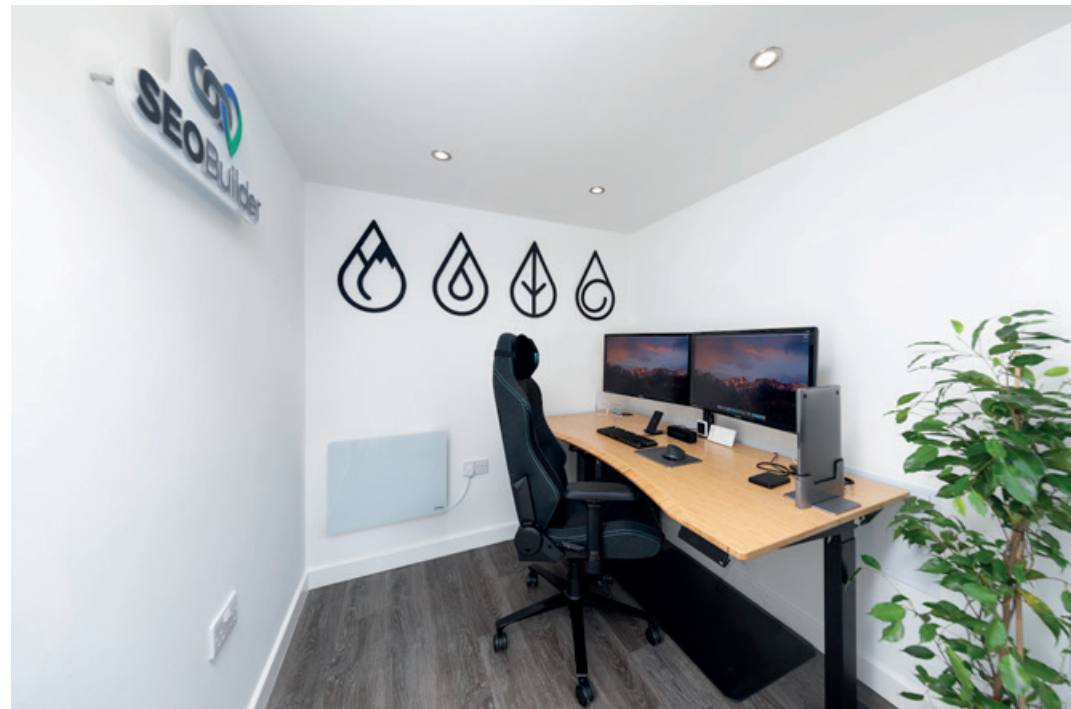




UPOD

Designed with simplicity in mind, this pod caters for those budding DIYers out there.

Supplied with detailed instructions, it could be a satisfying project for those who want to build their own. A cheaper price point and straightforward design, it is ideal for those with a more restricted budget.





HOT TUB PODS

With 'staycations' on the increase, the hot tub deck is an ever more popular addition.

Located right next to the pod, it creates the ultimate luxury garden retreat. Open to the stars, or fitted with canopy you can gaze at the moon surrounded by luxurious bubbles. Whether you choose the massimo or the medio, the extended deck with tub is a fantastic combo.





urbanpods™

Visit your local showpod

We are proud to partner with



urbanpods

Unit 19 Napier Square | Livingston | EH54 5DG

Showroom open 9am – 4pm 7 days a week

Models on display

Ufficio | Medio | Massimo | Perfetto

www.urbanpods.co.uk

01506 854-844

info@urbanpods.co.uk